



POSITIONIT

POSITIONIT



SHI-CHI

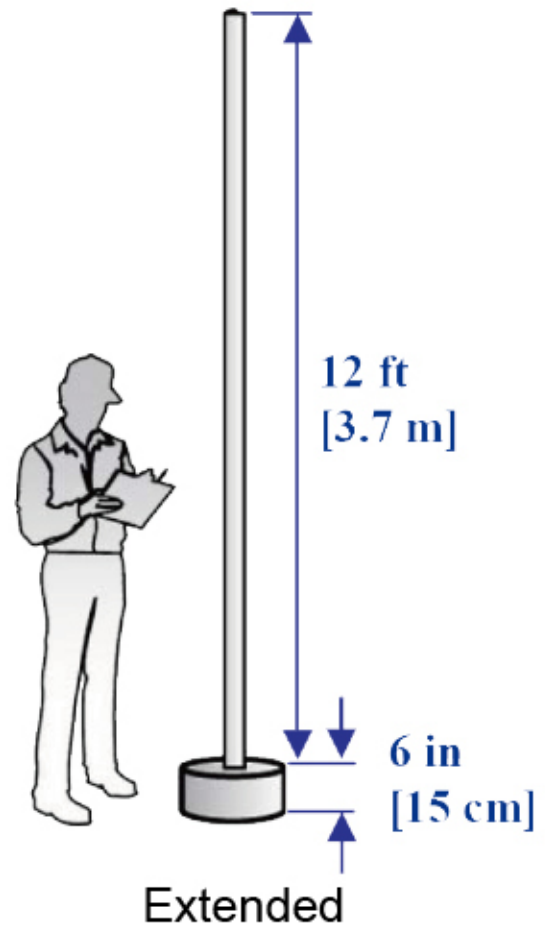
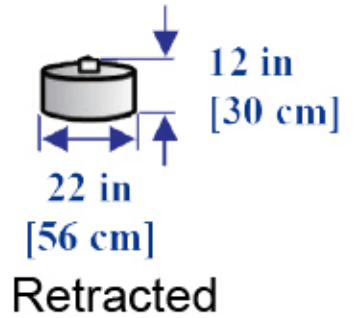


ACTUA  
M3  
M4  
M6  
M12



ACTUA

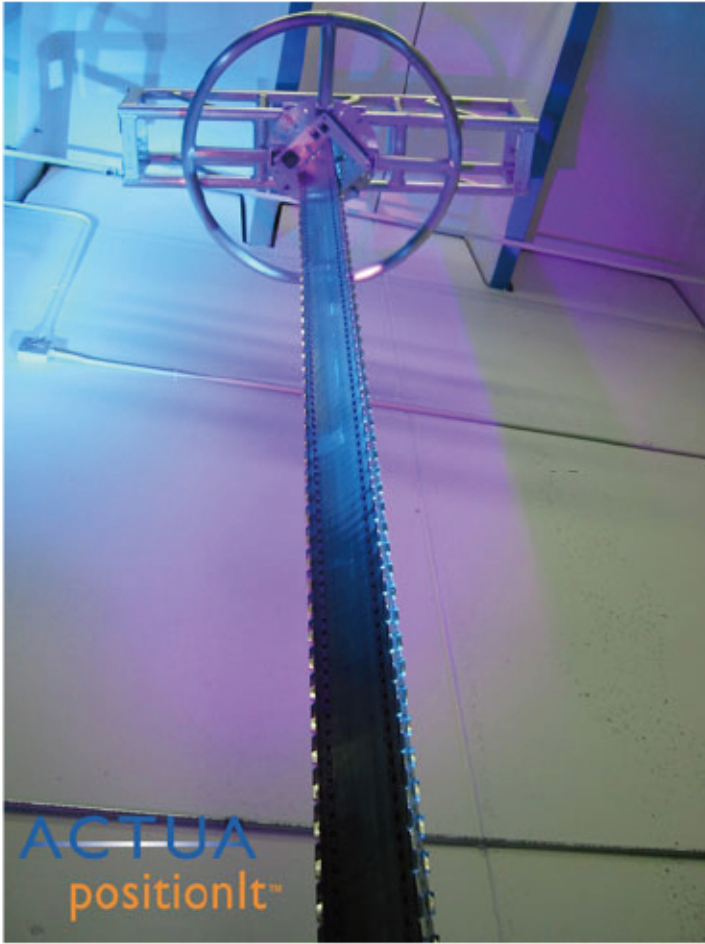
M3



| Vertical Lift Capacity                       |                     |
|--|---------------------|
| Upright                                      | 50 lbs [23 kg]      |
| Inverted                                     | 100 lbs [45 kg]     |
| Standard Extension*                          | 12 ft [3.7 m]       |
| Standard Stroke Speed*                       | 3 in/sec [8 cm/sec] |
| Power Requirements Specified Before Delivery | 115 or 230 VAC      |
| Motor HP                                     | 1/8 HP              |
| Full Load Amps                               | 2 Amps (115 VAC)    |
| Base Unit Weight                             | 80 lbs [36 kg]      |

\* Custom stroke speeds and extension lengths available

**C SMI I** M4

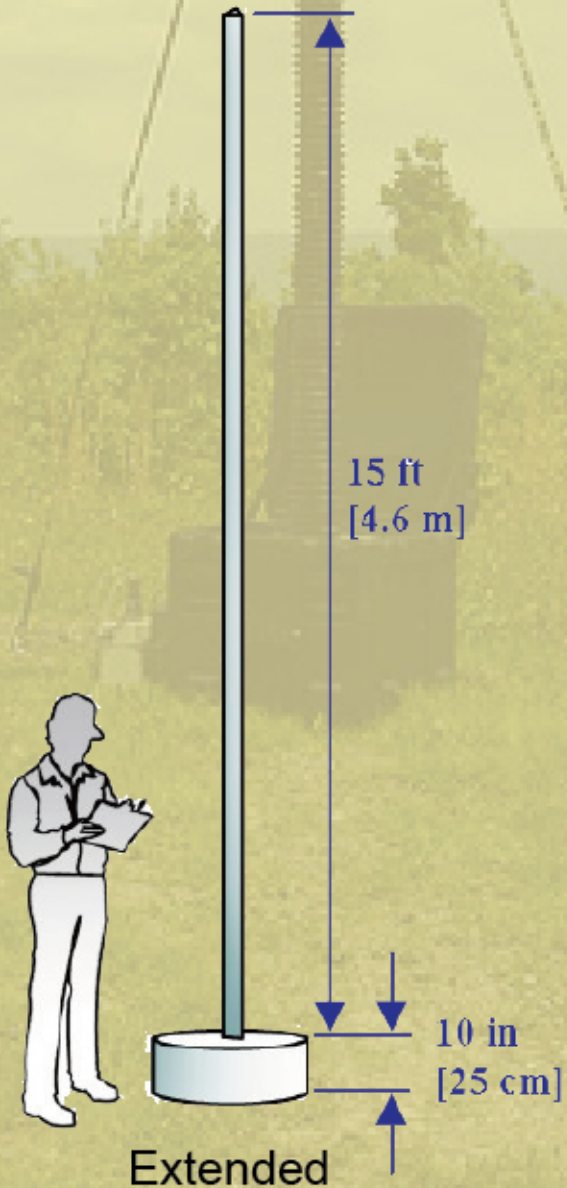
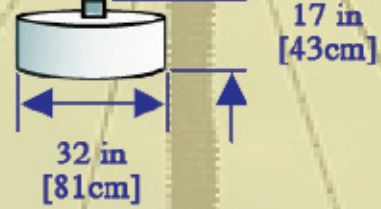
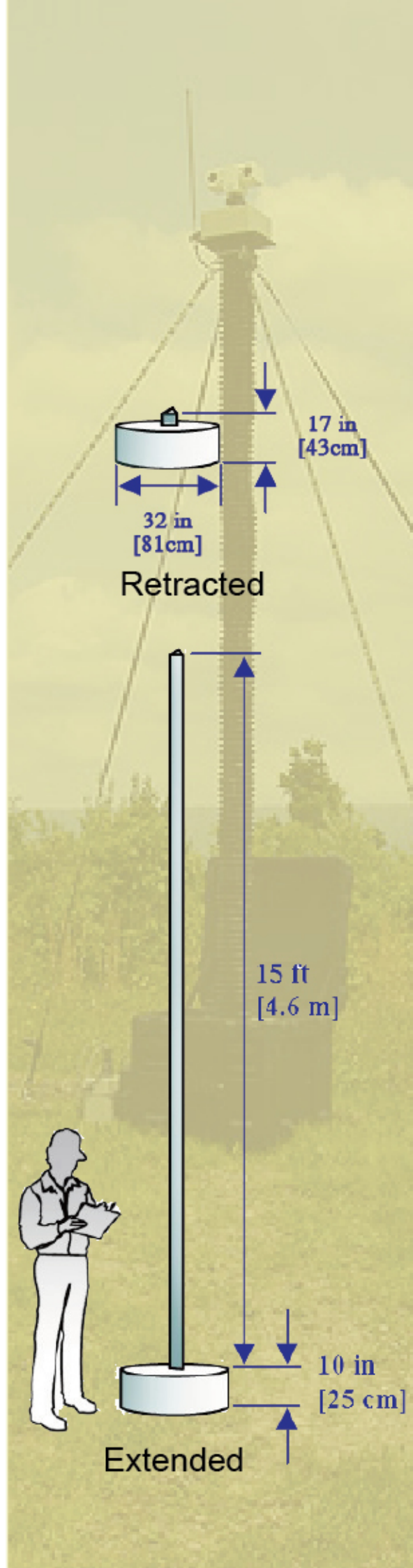


**ACTUA**  
positionIt™

**Vertical Lift Capacity**

|  |                      |
|--|----------------------|
| Upright                                      | 150 lbs [68 kg]      |
| Inverted                                     | 250 lbs [113 kg]     |
| Standard Extension*                          | 15 ft [4.6 m]        |
| Standard Stroke Speed*                       | 4 in/sec [10 cm/sec] |
| Power Requirements Specified Before Delivery | 115 or 230 VAC       |
| Motor HP                                     | 1/4 HP               |
| Full Load Amps                               | 3 Amps (115 VAC)     |
| Base Unit Weight                             | 150 lbs [68 kg]      |

\* Custom stroke speeds and extension lengths available



**POSITIONIT**



**89**

+886 2 2618 4242 +886 2 86302700  
+886 2 2618 4200 +886 2 86302701

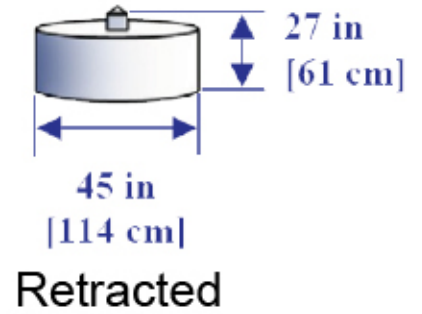


# POSITIONIT

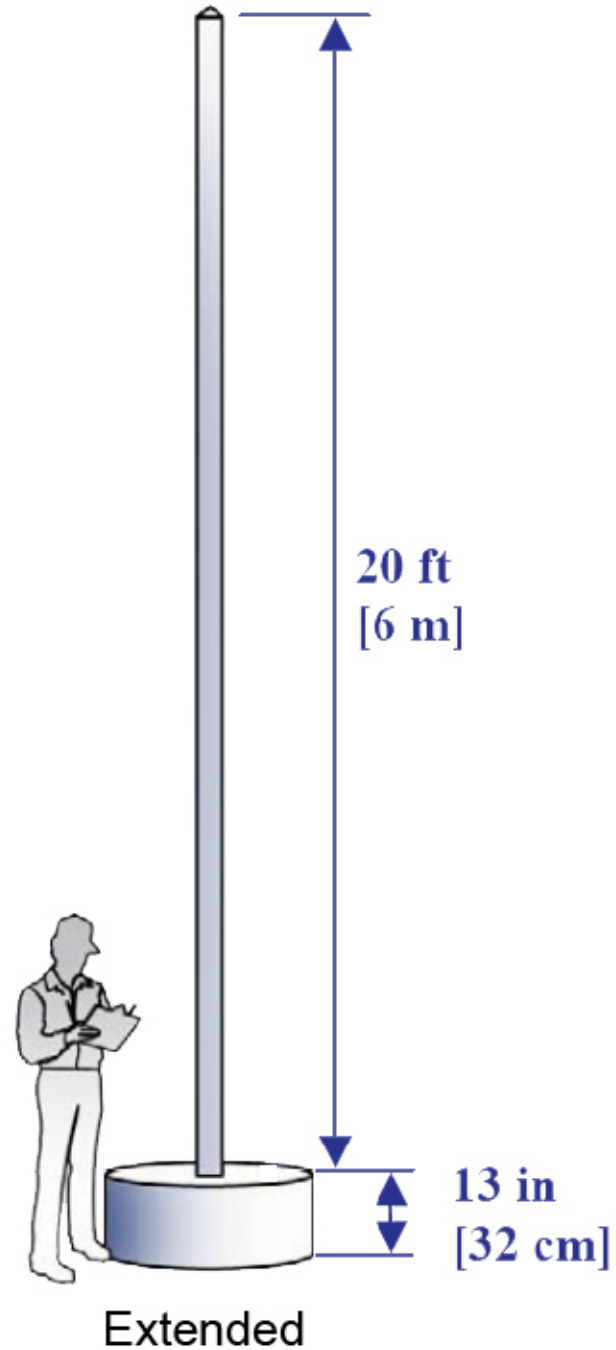
**M6**



**ACTUA**  
positionIt™

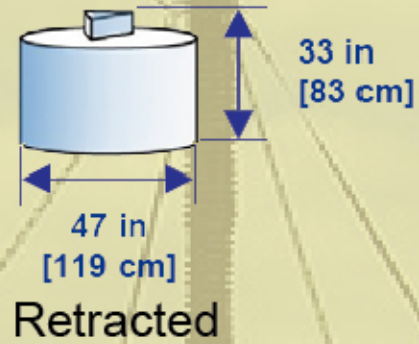


**ACTUA**  
positionIt™



| Vertical Lift Capacity                       |                      |
|--|----------------------|
| Upright                                      | 275 lbs [125 kg]     |
| Inverted                                     | 450 lbs [204 kg]     |
| Standard Extension*                          | 20 ft [6 m]          |
| Standard Stroke Speed*                       | 6 in/sec [15 cm/sec] |
| Power Requirements Specified Before Delivery | 115 or 230 VAC       |
| Motor HP                                     | 1 HP                 |
| Full Load Amps                               | 10 Amps (115 VAC)    |
| Base Unit Weight                             | 350 lbs [159 kg]     |

\* Custom stroke speeds and extension lengths available



**Vertical Lift Capacity**

|  |                            |
|--|----------------------------|
| Standard Duty - Upright/Inverted             | 500/700 lbs [227/318 kg]   |
| Heavy Duty - Upright/Inverted                | 1000/1400 lbs [454/635 kg] |
| Standard Extension*                          | 25 ft [7.6 m]              |
| Standard Stroke Speed*                       | 8 in/sec [20 cm/sec]       |
| Power Requirements Specified Before Delivery | 230 VAC                    |
| Motor HP                                     | 1-1/2 HP                   |
| Full Load Amps                               | 8 Amps                     |
| Base Unit Weight                             | 625 lbs [284 kg]           |

\* Custom stroke speeds and extension lengths available

